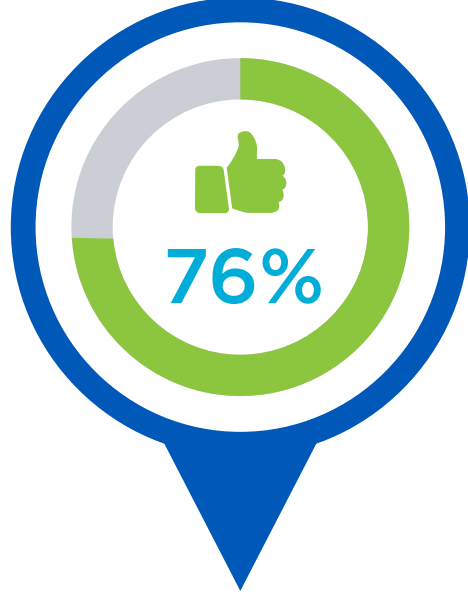
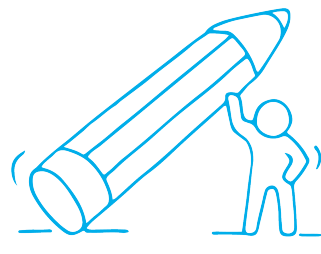


2023 COMPANY CULTURE SNAPSHOTS

Opportunities & Obstacles from **ENGAGE 2023: The Company Culture Report**



believe their workplace culture is better than it was last year



72%

work for a company that doesn't hold people accountable for their Core Values



86%

prefer to work hybrid or remote



42%

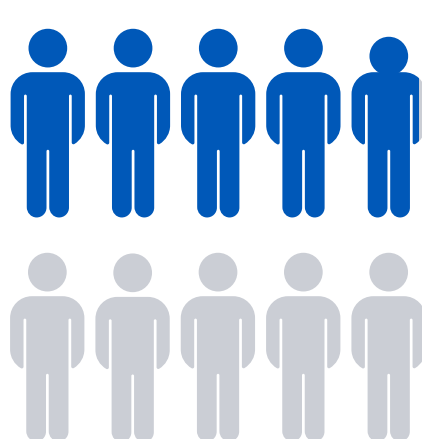
aren't always comfortable being themselves in the workplace

54%

don't feel fully informed when it comes to details relating to their job

did you know

49%



share their company is only somewhat focused or not focused at all on employee development

95%

report feeling a sense of purpose in their work



27%

report they've only received meaningful feedback 4X over the past year



January	February	March	April
MON TUE WED THU FRI SAT SUN	MON TUE WED THU FRI SAT SUN	MON TUE WED THU FRI SAT SUN	MON TUE WED THU FRI SAT SUN
2 3 4 5 6 7 8 9 10 11 12 13 14 15 16 17 18 19 20 21 22 23 24 25 26 27 28 29 30 31	1 2 3 4 5 6 7 8 9 10 11 12 13 14 15 16 17 18 19 20 21 22 23 24 25 26 27 28	1 2 3 4 5 6 7 8 9 10 11 12 13 14 15 16 17 18 19 20 21 22 23 24 25 26 27 28 29 30 31	1 2 3 4 5 6 7 8 9 10 11 12 13 14 15 16 17 18 19 20 21 22 23 24 25 26 27 28 29 30
May	June	July	August
MON TUE WED THU FRI SAT SUN	MON TUE WED THU FRI SAT SUN	MON TUE WED THU FRI SAT SUN	MON TUE WED THU FRI SAT SUN
1 2 3 4 5 6 7 8 9 10 11 12 13 14 15 16 17 18 19 20 21 22 23 24 25 26 27 28 29 30 31	1 2 3 4 5 6 7 8 9 10 11 12 13 14 15 16 17 18 19 20 21 22 23 24 25 26 27 28 29 30	1 2 3 4 5 6 7 8 9 10 11 12 13 14 15 16 17 18 19 20 21 22 23 24 25 26 27 28 29 30 31	1 2 3 4 5 6 7 8 9 10 11 12 13 14 15 16 17 18 19 20 21 22 23 24 25 26 27 28 29 30 31
September	October	November	December
MON TUE WED THU FRI SAT SUN	MON TUE WED THU FRI SAT SUN	MON TUE WED THU FRI SAT SUN	MON TUE WED THU FRI SAT SUN
4 5 6 7 8 9 10 11 12 13 14 15 16 17 18 19 20 21 22 23 24 25 26 27 28 29 30	2 3 4 5 6 7 8 9 10 11 12 13 14 15 16 17 18 19 20 21 22 23 24 25 26 27 28 29 30 31	6 7 8 9 10 11 12 13 14 15 16 17 18 19 20 21 22 23 24 25 26 27 28 29 30	4 5 6 7 8 9 10 11 12 13 14 15 16 17 18 19 20 21 22 23 24 25 26 27 28 29 30 31

42%

have managers who only "sometimes" or "rarely" do what they say they're going to do

ACCESS THE FULL REPORT HERE >